

Table 1. Landscape character type of Surčin case study - parameters of landscape composition and configuration

<b>Landscape sensitivity levels</b>	Shannon diversity index	Shanon's evenness index	Mean patch size	Patch size standard deviation	Number of patches	Mean shape index	Edge length	Edge density	Mean patch edge	Total area
	SDI	SEI	MPS (ha)	PSSD (ha)	NP (No)	MSI	TE (km)	ED (km/ha)	MPE (km)	TA (ha)
<b>LCT1 – Intensive agriculture on the loess plain of the Surčin settlement</b>	1.16	0.60	380.96	700.47	14	2.17	184910.12	34.67	13207.87	5333.497
<b>LCT2 – Intensive agriculture with elements of remnant forests on eluvial and fluvial relief in the settlements of Jakovo and Bečmen</b>	1.36	0.59	298.85	836.46	33	2.26	384431.31	38.98	11649.43	9862.04
<b>LCT3 – Intensive agriculture with elements of remnant forests on the alluvial plain of the Sava riverbank</b>	1.04	0.45	498.40	1790.82	26	2.07	353826.39	27.30	13608.71	12958.38

Table 2. Landscape quality assessment

Indicators	Coherence		Complexity			Naturalness	Openness	
Landscape types	LANDSCAPE SENSITIVITY ASSESSMENT							
	SDI	PSSD	PD	SEI	AWMPFD	H	MPAR	CA
<b>LCT1 – Intensive agriculture on the loess plain of the Surčin settlement</b>	1.16	700.47	0.0026	0.60	9.31	5.497247	283.39	3712.97
<b>CUMULATIVE VALUE</b>	MEDIUM		LOW			LOW	MEDIUM	
<b>LCT2 – Intensive agriculture with elements of remnant forests on eluvial and fluvial relief in the settlements of Jakovo and Bečmen</b>	1.36	836.46	0.0033	0.59	12.95	4.263126	152.85	6977.91
<b>CUMULATIVE VALUE</b>	HIGH			HIGH		LOW	HIGH	
<b>LCT3 – Intensive agriculture with elements of remnant forests on the alluvial plain of the Sava coast</b>	1.04	1790.82	0.0020	0.45	12.76	4.650081	95.73	1935.31
<b>CUMULATIVE VALUE</b>	LOW		HIGH			MEDIUM	LOW	

Table 3. Surčin landscape biodiversity assessment

Landscape biodiversity assessment														
Indicators	Heterogeneity				Intensity of land use				Connectivity			Resilience		
Landscape types	SDI	SEI	NP	TLA	H	TLA	TLA%	NP	ED	NP	MPE	NP	TLA	ED
<b>LCT1 – Intensive agriculture on the loess plain of the Surčin settlement</b>	1.16	0.60	14	5333.47	5.49	5333.47	18.94	14	34.67	14	13207.87	14	5333.47	34.67
	MEDIUM				LOW				LOW			LOW		
<b>LCT2 – Intensive agriculture with elements of remnant forests on eluvial and fluvial relief in the settlements of Jakovo and Bečmen</b>	1.36	0.59	33	9862.04	4.26	9862.04	35.02	33	38.98	33	11649.43	33	9862.04	38.98
	MEDIUM				MEDIUM				LOW			MEDIUM		
<b>LCT3 – Intensive agriculture with elements of remnant forests on the alluvial plain of the Sava river bank</b>	1.04	0.45	26	12958.82	4.65	12958.82	46.02	26	27.30	26	13608.71	26	12958.82	27.30
	MEDIUM				MEDUM				HIGH			MEDIUM		

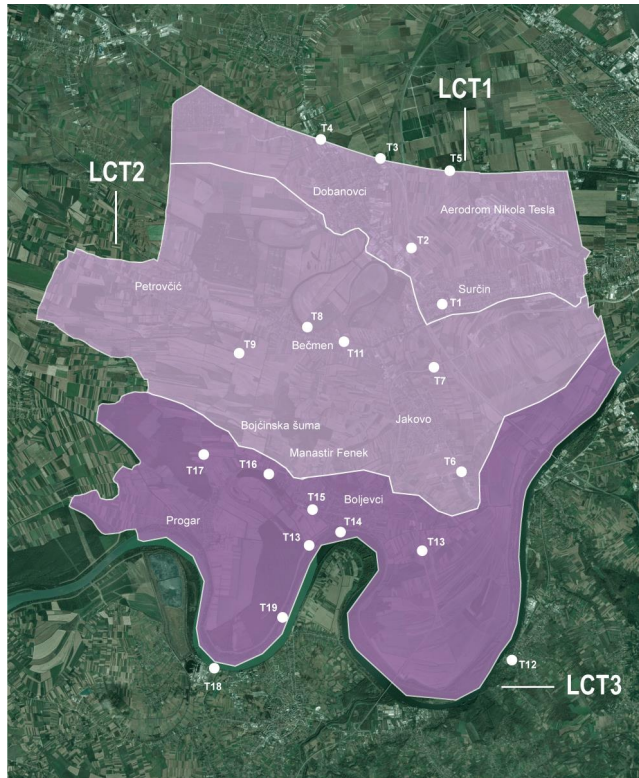


Table 4. Levels of visual sensitivity of LCT

Landsc ape type	Landsc character photo	Number of photo	Value of photo	SUM VALUE OF VISUAL SENSITIVITY of LCT	
TKP1	T1		2	2	medium
	T2		3		
	T3		2		
	T4		2		
	T5		3		
TKP2	T6		2	2	medium
	T7		2		
	T8		3		
	T9		2		
	T10		3		
	T11		1		
TKP3	T12		3	3	high
	T13		3		
	T14		3		
	T15		2		
	T16		3		
	T17		2		
	T18		3		
	T19		3		